

**IRSN**

INSTITUT  
DE RADIOPROTECTION  
ET DE SÛRETÉ NUCLÉAIRE

*Enhancing nuclear safety*

# The Mysterious Risk:

*Indoor radon and the evolution of its perception in France*

Ludivine GILLI

Cynthia Réaud, Sylvie Charron

RICOMET 2019 - Barcelona

MEMBER OF

**ETSON**

EUROPEAN  
TECHNICAL SAFETY  
ORGANISATIONS  
NETWORK



# Baromètre IRSN

La perception des risques  
et de la sécurité par les Français

## ➤ A yearly study designed to monitor the evolution of risk perception in France

- Conducted since 1990
- A core of questions kept from one year to the other
- A stable methodology
  - Face-to-face survey
  - Representative sample of 1,000 French people

2000  
questions

+ de 30  
ans d'enquêtes

## ➤ A valuable tool to analyze the evolution of risk perception by the French population

# Indoor radon in the IRSN Barometer

➤ Followed since 1996

➤ Among 35 risks questioned from 3 angles:

- The seriousness of the risk
- the trust towards the authorities to manage it
- the credibility of the information given about it

➤ Other risks include:

- NPPs,
- Chemical installations,
- Air pollution,
- Alcohol consumption,
- Domestic accidents...



# Radon compared to other risks in 2017

## ➤ Seriousness of risk: 35<sup>th</sup> (last) position

- Comes after medical X-rays (34<sup>th</sup>) and radiation therapy (33<sup>rd</sup>)
- Cancer and terrorism are on top of the list

## ➤ Trust in the authorities: 31<sup>st</sup> position

- Comes before soil pollution (32<sup>nd</sup>) and pesticides (33<sup>rd</sup>)
- AIDS and forests fires are on top of the list

## ➤ Credibility: 28<sup>th</sup> position

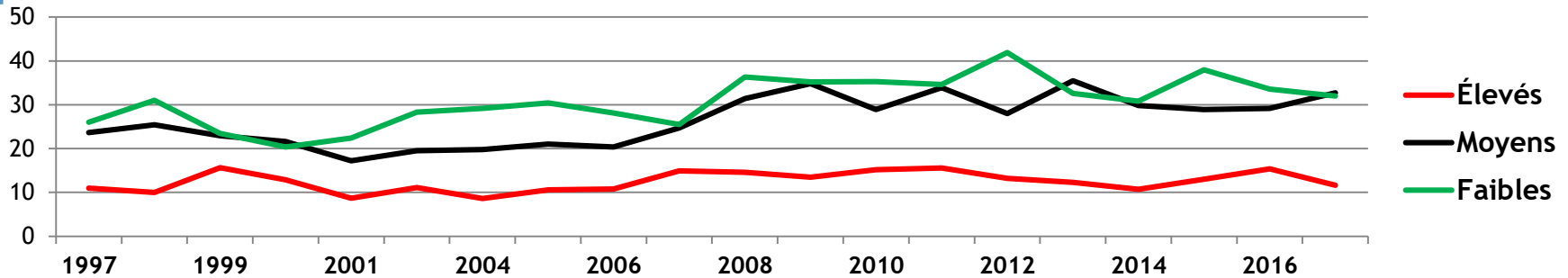
- Comes before GMOs(29<sup>th</sup>) and chemical plants (30<sup>th</sup>)
- Traffic accidents and heat waves are on top of the list

→ Radon perceived as a low risk ; low trust level in the authorities to handle it, and low credit given to the information about it.

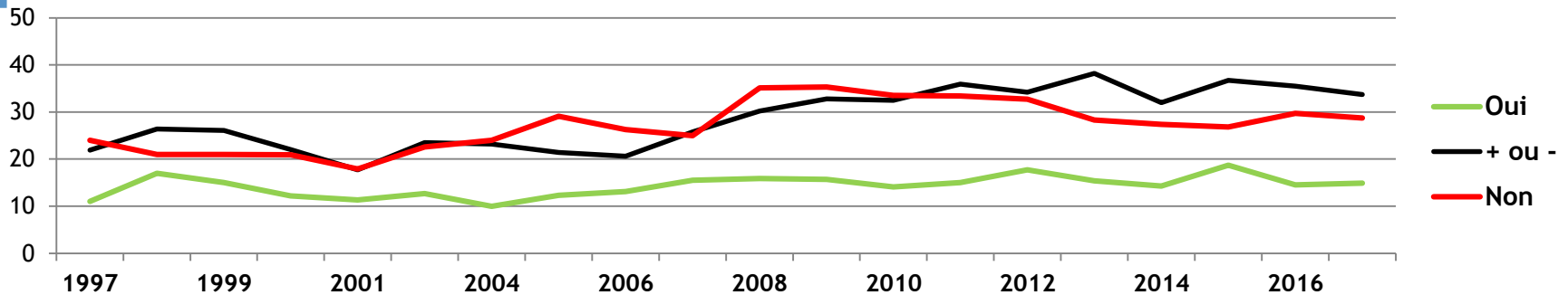


# Evolution of indoor radon perception

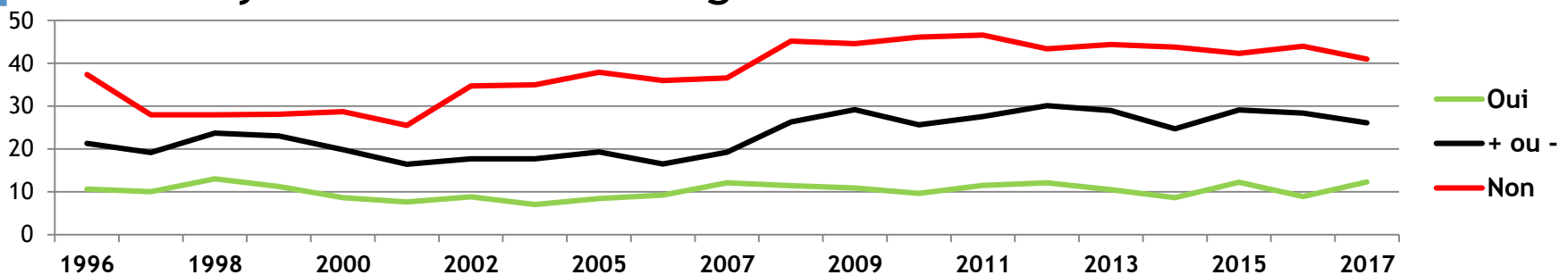
## Seriousness of the indoor radon risk



## Trust in the authorities to handle it



## Credibility of the information given about it



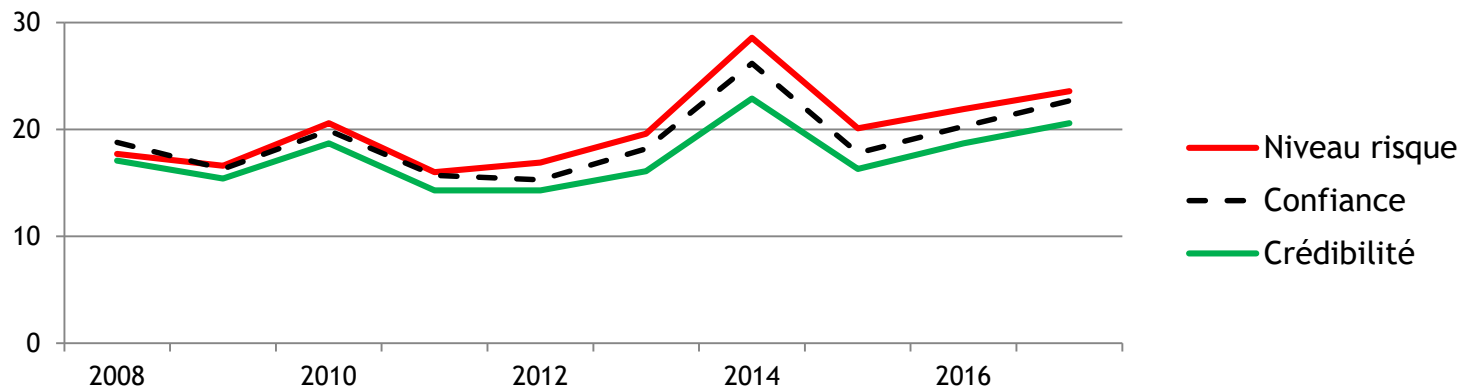
# So... why the « mysterious risk »? (1/3)

## ➔ Radon gathers by far the most « don't know » replies

■ For all 3 dimensions (seriousness of risk, trust and credibility), most of the 35 risks gather « don't know » replies averaging 1% to 2 %

■ Radon gathers sky-high scores:

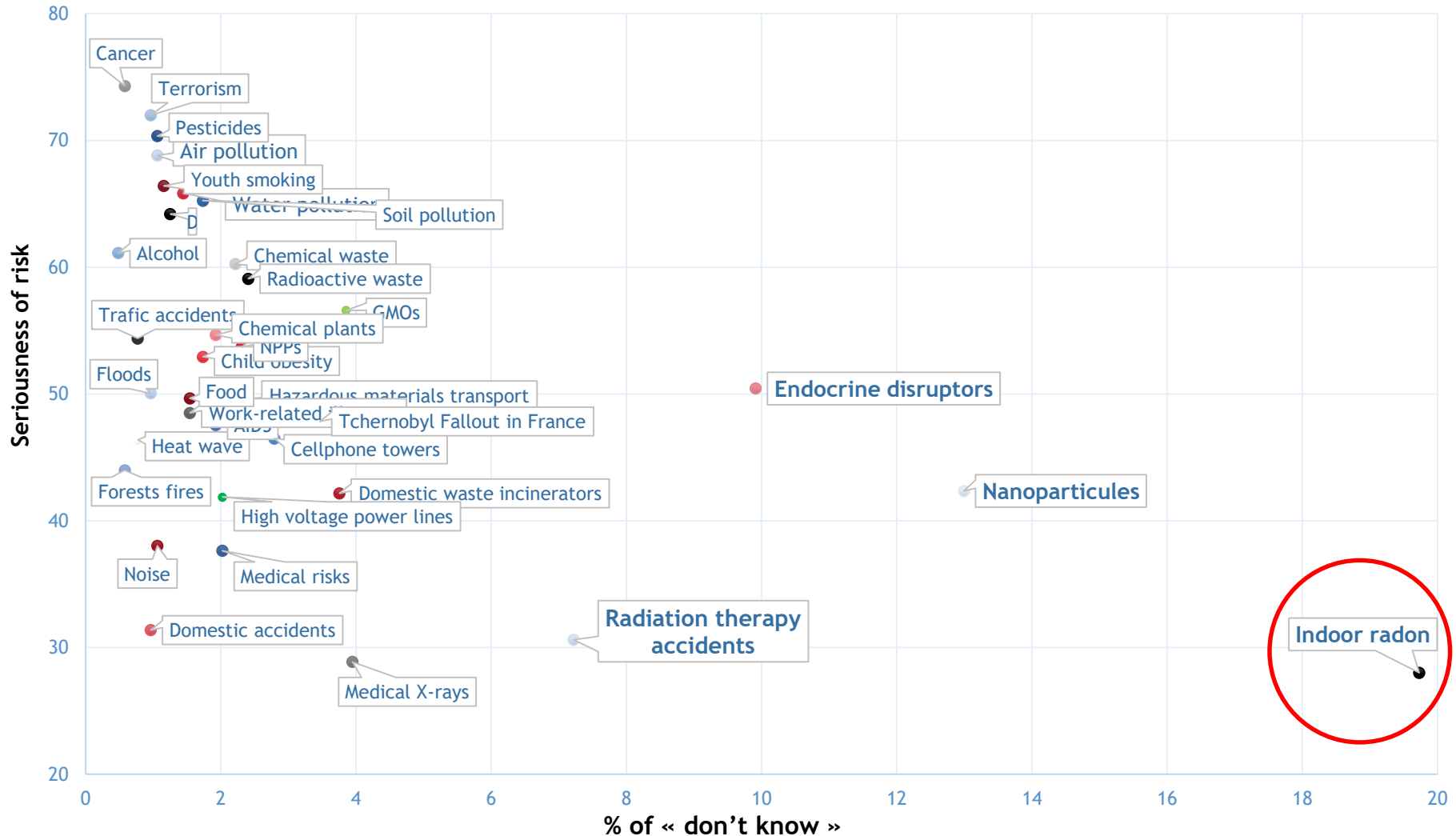
- Seriousness of risk: 24 %
- Trust: 23 %
- Credibility: 21 %



■ The only two risks coming (not really) close are:

- Nanoparticules (ca. 10-12 %)
- Endocrine disruptors (8-10 %)

# So... why the « mysterious risk »? (2/3)



# So... why the « mysterious risk »? (3/3)

- Indoor radon aligns with 2 relatively new and complex risks
- Contrary to other risks, radon targets specific territories while the IRSN Barometer is representative of the entire French population

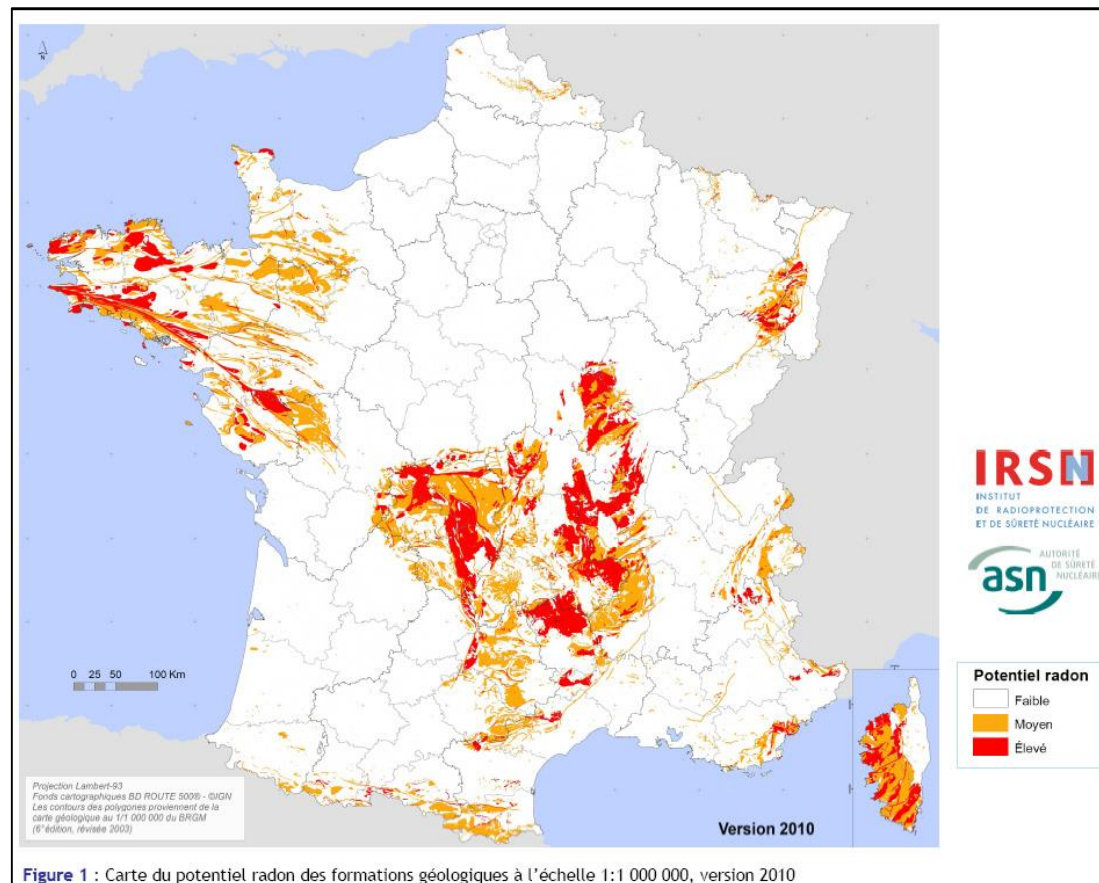


Figure 1 : Carte du potentiel radon des formations géologiques à l'échelle 1:1 000 000, version 2010



# Signs of improvement

➤ A very high « don't know » level ...

➤ ... that used to be even higher!

Numbers that are today around 20 %  
used to be around 40 and 50 %

➤ Cause of the reduction?

→ Sudden rise in French arrogance?

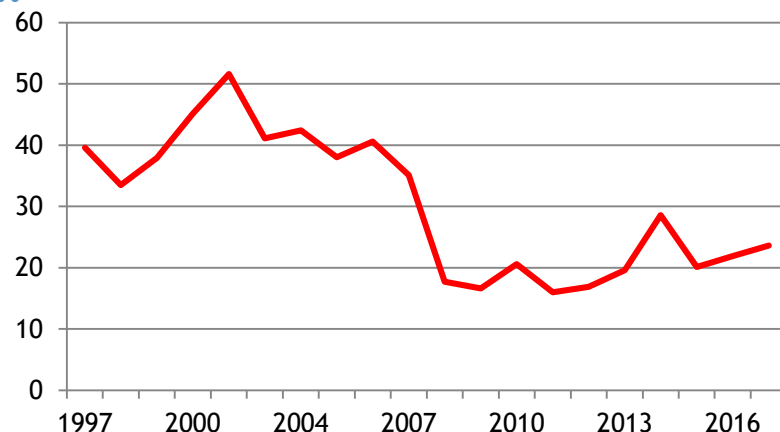
→ Methodologic effect in « don't know » treatment?

→ Effectiveness of the growing number of actions designed to raise awareness in the affected areas?

■ 1990s: European recommendations on indoor radon

■ 2000s: French regulations (2002 *décret*, 2004-2008 *arrêtés*, PNSE 1(2004-2008) and following, 2016 ordinance...)

■ 2010s: growing targeted communication on indoor radon risk (cf. pilot program in Haute-Vienne)

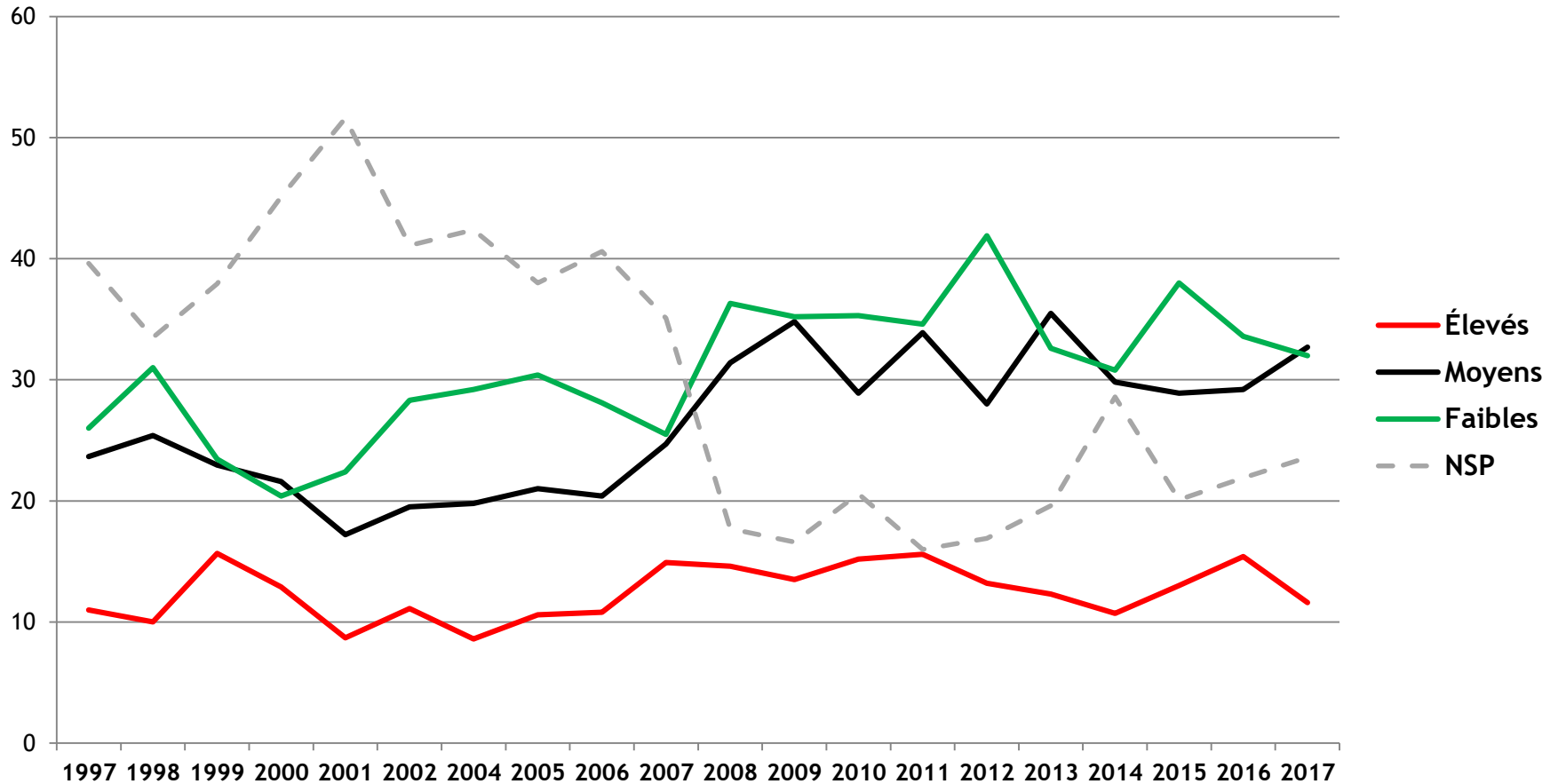


# Potential next steps

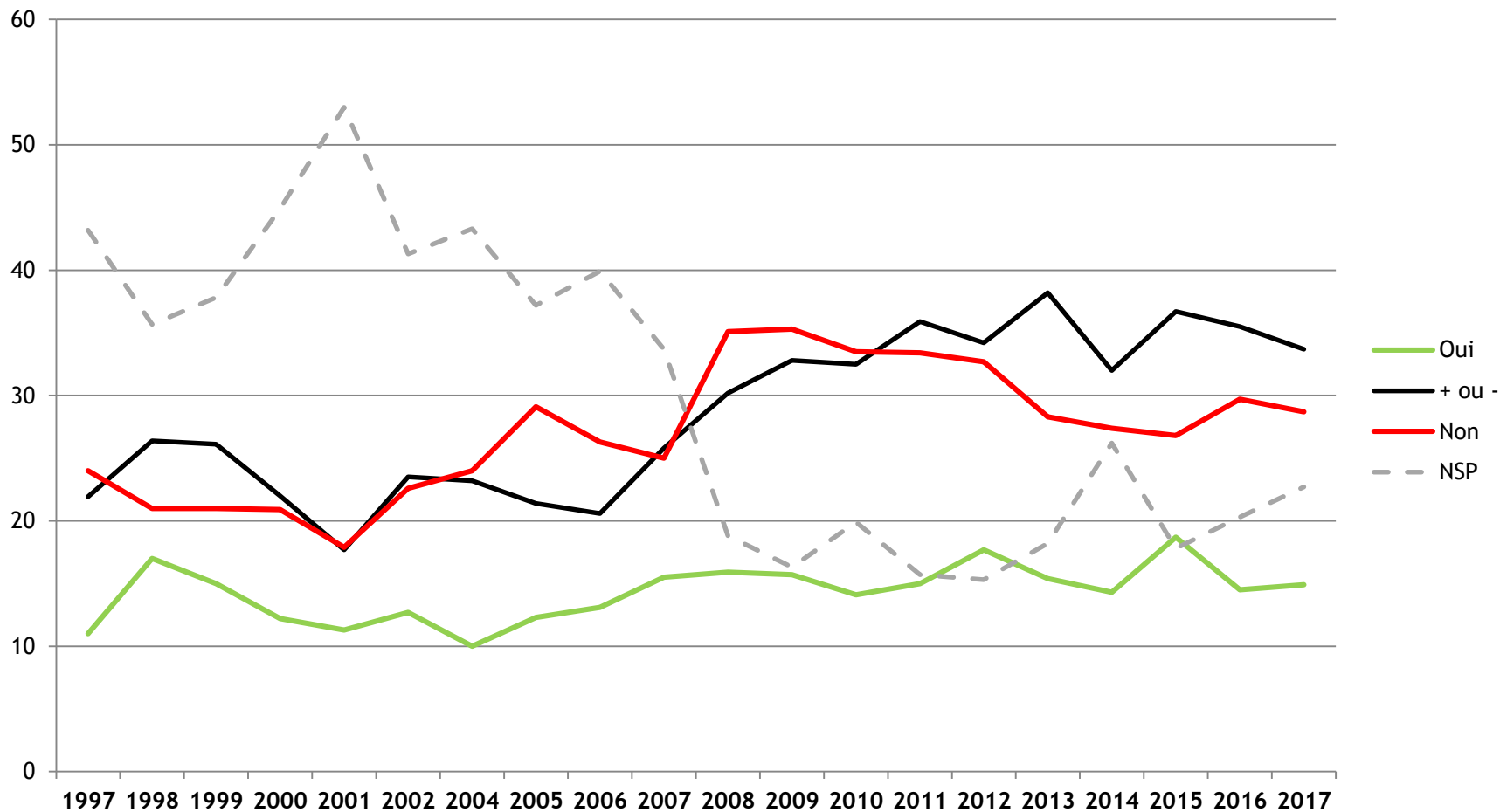
- **Continued monitoring of the « don't know » scores**
  - ▮ Check if the levels stay the same, decrease or increase
- **Addition of a qualitative question on indoor radon**
  - ▮ Get a better sense of the indoor radon knowledge... and potentially see the « don't know » scores increase as a result
- **Create a specific panel within radon affected areas**
  - ▮ Compare the knowledge level on indoor radon between the general public and the affected areas

Thank you!

# Radon - seriousness of risk



# Radon - trust in the authorities



# Radon - credibility of the information

